



# Nursery Lanesfield Primary School 2021-2022



# Lanesfield Primary School

## Staffing for Early Years Foundation Stage - **Nursery**



Miss L Walker  
Nursery Teacher



Mrs R Sohal  
Nursery LSA



Miss A Hill  
EYFS Phase Leader



Mrs Abley  
Forest school teacher  
SEND/CO





# Lanesfield Primary School

Other members of staff in EYFS and around school



Mrs Rollinson  
Head Teacher



Miss Holder  
Reception  
HLTA



Mr Parker  
Site Manager



Mrs Martin  
Receptionist/  
Admin Assistant



*Finance Assistant:*  
Mrs Haywood



*Receptionist:*  
Mrs Sangha



*PPA Cover - P.E:*  
Miss Cotham



Mrs Dudfield  
Parent Ambassador



# Welcome

## **Our Vision**

"To create a school with a unique atmosphere and endless opportunities. Where every child is known as an individual, and instilled with the belief that anything is possible, and succeeds beyond expectation".

## **Our Mission**

To improve forever the lives and futures of every Lanesfield pupil regardless of background or circumstance, by providing an outstanding education.

## **Our Promise**

To ensure our children come first in everything we do.

Lanesfield Loves Learning



# Our values

- To know and value every child as an individual to enable them to fulfil their true potential
- To excel in every aspect of teaching, embracing new technologies and techniques
- To instil the confidence and self-belief in our pupils to believe anything is possible
- To create a happy, nurturing environment where respect for each other is second nature
- To be an integral, invaluable part of our local community
- To never stand still and continue on our journey of improvement



# Lanesfield Primary School Expectations

- ▶ **High Expectations** – This is achieved through team work with us as a team and you as a parent.
- ▶ **Attendance** – Every day is important. Holidays are not authorised in term time.
- ▶ **Behaviour** – We have clear expectations of behaviour through our star of the day and red card reward system.



# Lanesfield Primary School

- ▶ Forms to complete -
- ▶ Important Personal Details
- ▶ NHS Medical
- ▶ Photo Consent
- ▶ Uniform
- ▶ AUP (Acceptable use policy)
- ▶ Ethnicity Information

- To be returned ASAP.



# Uniform

► We are extremely proud of our smart uniform and it is important for every child to also feel this sense of pride by wearing correct uniform at all times.

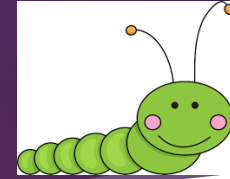
A simple basic school uniform is in operation at the school and is as follows:

- Grey trousers, skirt or pinafore
- White shirt or blouse
- Purple cardigan or school jumper
- School tie
- Sensible black school shoes
- White or grey socks / tights (Optional summer wear)
- Purple/White check dress
- Grey shorts
- White polo shirt





# Caterpillars – 30 hours



-Entry and Exit through the same door.

8:30 Arrival

3:20 Collection



# Lunch (Caterpillars)

Lunch is provided by Aspens and you will receive paperwork to help you logon to the website. Every meal is booked remotely by you so we ask that you book your child's meal in advance and talk to them about their options.

Alternatively your child can bring a packed lunch to school.

- Lunch cover cost is £4 per day.
- Please ensure we have your 30 hour code or confirmation of renewal ASAP.



# Entrance Busy Bee's (Morning Session)



Arrival 8:30am- Through school gate on playground and Nursery door is immediately on the left.

# Exit- Busy Bee's



Exit- 11:30am

Through main school gate as if walking to the reception/office and immediately on the right.

# Ladybirds - Afternoons



Entry 12:20

# Ladybirds



Collection: 3:20

Note: If you are running late you must drop or collect your child from the School Office



# Lanesfield Primary School



- ▶ Toast/ Fruit/Water
- ▶ Wellies to be kept in school (labelled)
- ▶ Forest School Kit (Chn out in all weathers)

# Forest School Key aims:

To nurture  
self esteem.

To enhance children's  
communication  
skills and ability to  
work as a team.

To equip children  
with love and  
respect for the  
outdoors.

To provide real life  
opportunities and  
create independent  
learners.

To develop  
healthier  
bodies.

To teach  
resilience and  
risk taking.





# A Day in Nursery -

- Children arrive
- CI activities/register and toast
- Focus (In Key Groups)
- Choosing time with focus activity
- Fruit and Milk (provided by school)
- Outdoor time
- Story time / Singing
- Home time



# Food Tasting

On occasions we may make or taste a variety of different foods linked to learning.

We will send letters home before completing these activities to request your consent and check for allergies and dislikes.

It is important to fully complete the forms we have sent out and inform us if your child's circumstances change at any point during the year.



# Early Reading



In nursery we like to stress the importance of early reading and we call this our “Homework”

Reading with your child once a day has so many benefits

- ▶ Increased vocabulary
- ▶ Growth in imagination
- ▶ Deepening of understanding of the world
- ▶ Increased concentration, listening and understanding.

# Visits...



We do go out on offsite visits.

Letters to inform you further and request your consent will be given out at the appropriate time.

Hopefully we will have good news about school trips this year after the impact of Coronavirus. We will let you know as soon as we organise any trips.

# Parent Open Session



Each term we offer the opportunity for Parents to join us for a Parent Open Session.

This is where you will be able to join in the exciting topical activities, and share these experiences with your child.

We will look carefully at the dates for these sessions, especially after the impact of Coronavirus. We will let you know any good news about sessions like this as soon as we have clearance and guidance to hold such events.



# Changes of clothes

We will endeavour to change your child in EYFS, however if they are distressed we will call a family member to support us in this process.

We do have some spare clothes in EYFS, however please bring your child with a bag of spare clothing as a “just in case”



# Labels

- ▶ Please label all items sent into Nursery, especially coats, jumpers, cardigans, ties, shoes, hats, scarves, water bottles etc...
- ▶ **(Water bottles containing only water not juice)**
- ▶ We cannot be responsible for items of clothing that get mixed up or go missing if your child's name is not clearly written inside.

Thanks!





# Tapestry

- ▶ Tapestry is our online learning journey of each child in EYFS.
- ▶ You will receive details about Tapestry in the next few weeks unless you are an existing parent at Lanesfield.
- ▶ The app is simple to download from the app store and keeps you up to date with your child's learning journey.
- ▶ You can add information, pictures and videos to your child's Tapestry portfolio.
- ▶ Each profile is specific and confidential to your child.





# What happens next...

---

**W/C 6<sup>th</sup> September:** 1 hour session with 1 parent

---

**W/C 13<sup>th</sup> September:** 2 hour session without parent

---

**W/C 20<sup>th</sup> September:** Busy Bee's and Ladybirds to start nursery normal hours.  
**Caterpillars** attending **AM only**.

---

**W/C 27<sup>th</sup> September:** Caterpillars to begin 30 hours.

---

\*You will receive specific dates and times in the post\*



# Ready for September...

Please use this sheet to let me know all about you! I would love to see these on your first few days in September to help me get to know you a little better.

You could try writing your name, drawing pictures of your family or fill the space with lots of photos! I look forward to seeing what you create.



**All about me**



You will receive a booklet through the post with transition information all about us and our team...

The booklet includes a space for your child to tell us all about them...

# Lanesfield Primary School



## Any Questions ?

Please call us on 01902 558950 Or

contact us via the school email:

[contactus@lanesfieldprimary.co.uk](mailto:contactus@lanesfieldprimary.co.uk)

Or send us a message via our webpage:

[Lanesfieldprimary.co.uk](http://Lanesfieldprimary.co.uk)

Thank you!

